

# Submittal Data Sheet

CS-HM60BAMU3 -- Indoor A-Coil

CU-HM48BAHU -- Outdoor Extreme Heat Pump

**Panasonic**

## Dual Fuel Heat Pump System

Location:	Approval:
Engineer:	Date:
Submitted to:	Construction:
Submitted by:	Unit #:
Reference:	Drawing #:



## INDOOR SPECIFICATION

ESP(in.W.G)	0 - 0.8
Indoor Air Flow (Turbo/H/M/L/Si) (CFM)	-
Indoor Noise Level (Turbo/H/M/L/Si) (dBA)	-
Dimension (WxDxH)	inch 21.61 x 21.5 x 27.8
	mm 549 x 546 x 706
Package (WxDxH)	inch 31.1 x 25 x 25.59
	mm 790 x 635 x 650
Net/Gross Weight	lbs 96.78/115.08
	kg 43.9/52.2

## OUTDOOR SPECIFICATION

Compressor Type	ROTARY
Compressor Model	MTH550UKPC8FU
Refrigerant	R454B
Refrigerant Oil Charge(mL)	1800
Refrigerant Oil	HAF68D1C
Outdoor Air Flow (Max) (CFM)	3037.1
Outdoor Noise Level (dBA)	65
Dimension (WxDxH)	inch 38.58 x 16.34 x 38.39
	mm 980 x 415 x 975
Package (WxDxH)	inch 45.08 x 19.68 x 42.52
	mm 1145 x 500 x 1080
Net/Gross Weight	lbs 201.06/232.36
	kg 91.2/105.4

## EFFICIENCY

Cooling		Heating	
SEER2	15.2	HSPF2-4	8.8
EER2	10	COP	3.12

## PERFORMANCE of Cooling

### Cooling (Btu/hr)

Rated Capacity	45,000
Min/Max Capacity	16,000 ~ 48,000
Moisture Removal(L/h)	-
Standard Operating Range(*F/C)	-22~122(-30~50)
Rated Cooling Conditions:	Indoor: 80°F DB/67°F WB Outdoor: 95°F DB/75°F WB

## PERFORMANCE of Heating

### Heating (Btu/hr)

1. @ 47°F Rated	48,000
1. @ 47°F Min/Max Capacity	16000 ~ 50000
2. @ 17°F Rated	34,400
3. @ 5°F Rated: Capacity / COP	42000/1.85
3. @ 5°F Max: Capacity	42,000
Standard Operating Range(*F/C)	-22~75(-30~24)
1. Rated Heating Conditions:	Indoor: 70°F DB/60°F WB Outdoor: 47°F DB/43°F WB
2. Rated Heating Conditions:	Indoor: 70°F DB/60°F WB Outdoor: 17°F DB/15°F WB
3. Heating Conditions, Compressor Operating at Max. Frequency	Indoor: 70°F DB/60°F WB Outdoor: 5°F DB/5°F WB

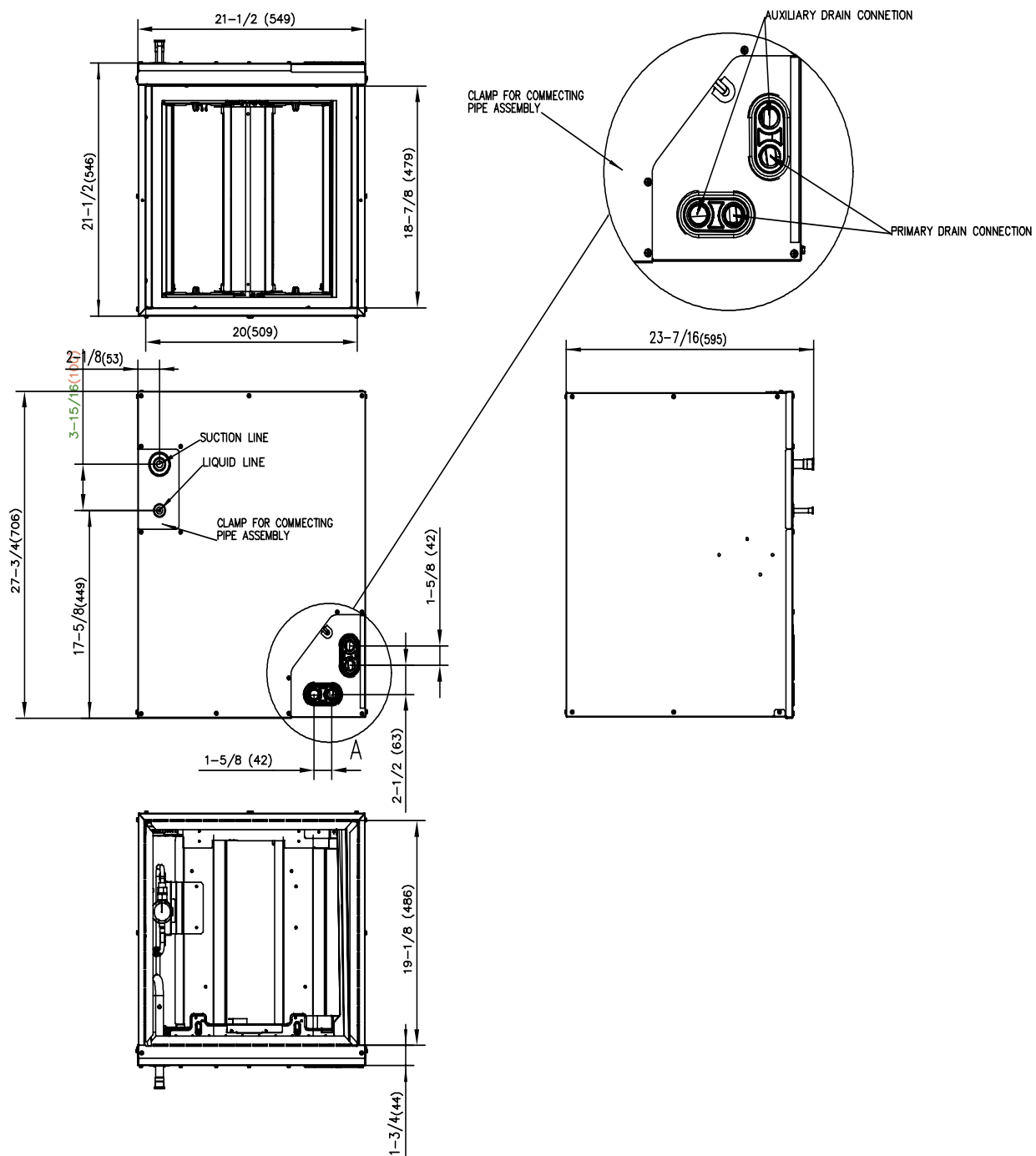
## ELECTRICAL

Indoor Power Supply	24V,60Hz,1Ph
Indoor MCA 115V/(208/230V)	-
Indoor MOP	-
Outdoor Power Supply	208/230,60Hz,1Ph
Outdoor MCA	38
Outdoor MOP	40
Communication Wiring	AWG 20-2
Compressor RLA	28
Outdoor Fan Motor RLA	2
Outdoor Fan Motor W	-
Indoor Fan Motor RLA	-
Indoor Fan Motor W	-
System Power Input @ Cooling (W)	4500(1400 ~ 5080)
System Power Input @ Heating (W)	4500(1200 ~ 5300)
MCA: Min. circuit amps (A)	MOCP: Max. over current protection (A)
RLA: Rated load amps (A)	W: Fan motor rated output (W)

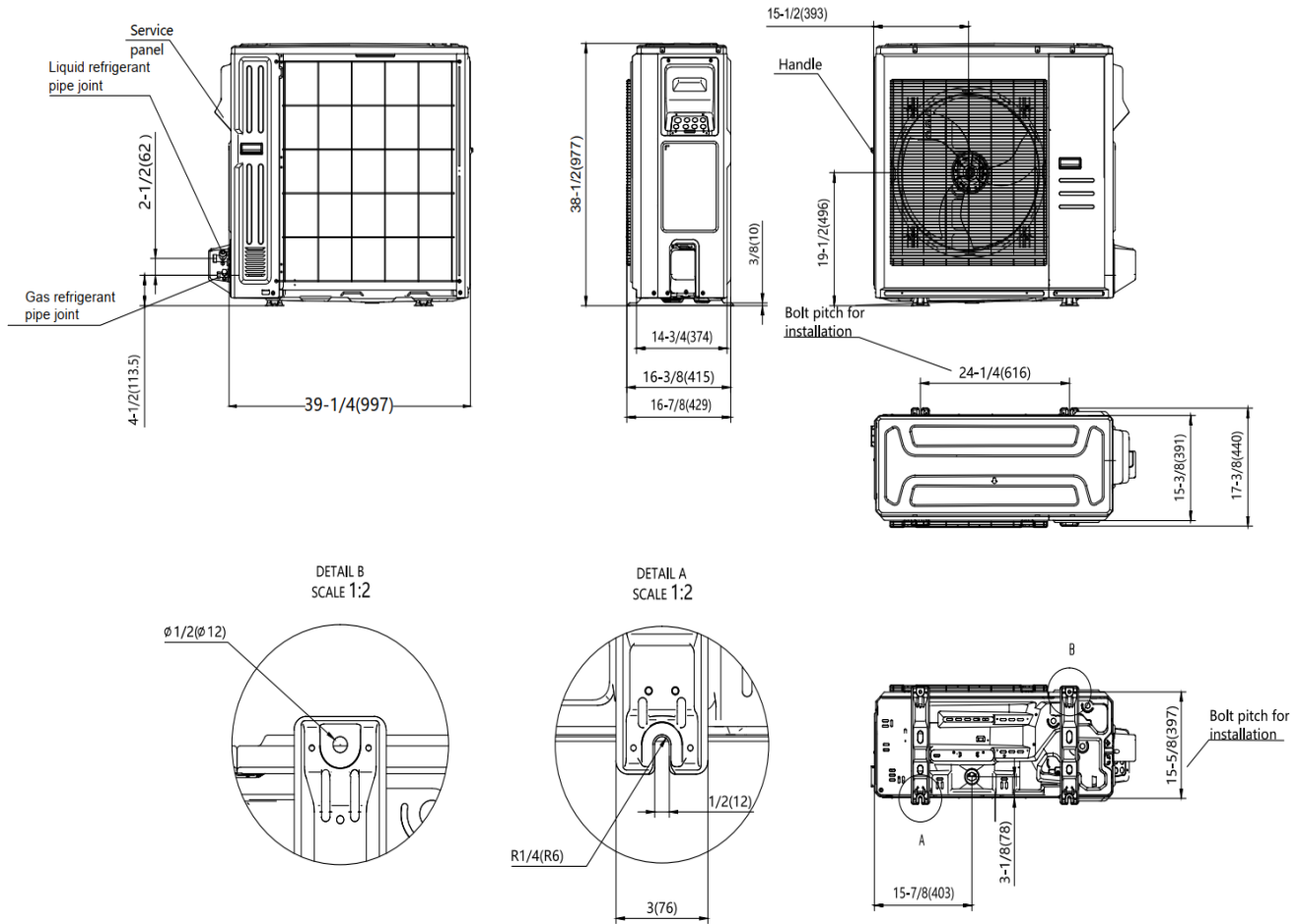
## PIPING

Throttle type(Indoor)	EXV
Throttle type(Outdoor)	EXV
Liquid Size	9.52mm(3/8in)
Gas Size	19mm(3/4in)
Max. Piping Length(ft/m)	246(75)
Max. Height Difference(ft/m)	98.4(30)
Max. Pre-charged Length(ft/m)	24.6(7.5)
Refrigerant Pre-charged Amount(oz/kg)	134.04(3.8)
Additional Charge of Refrigerant((oz/ft)/(g/m)	0.7(65)
Connection Method	Flared

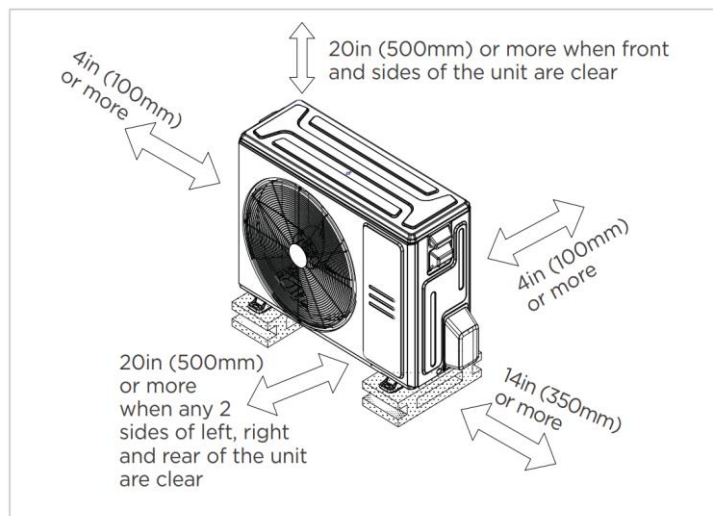
# Indoor Unit Dimension



## Outdoor Unit Dimension



## Installation Instruction For Outdoor Unit



☒ Meets all spatial requirements shown in Installation Clearance Requirements above.

## Features

- Multi-position installation: horizontal(left or right), vertical( up or down)
- Aluminum Coil
- R454B refrigerant sensor
- Easy Maintenance
- Multiple control options available:
  - Two way communication wired controller with built-in WiFi:120N(X6W)
  - Third-Party 24V Thermostat