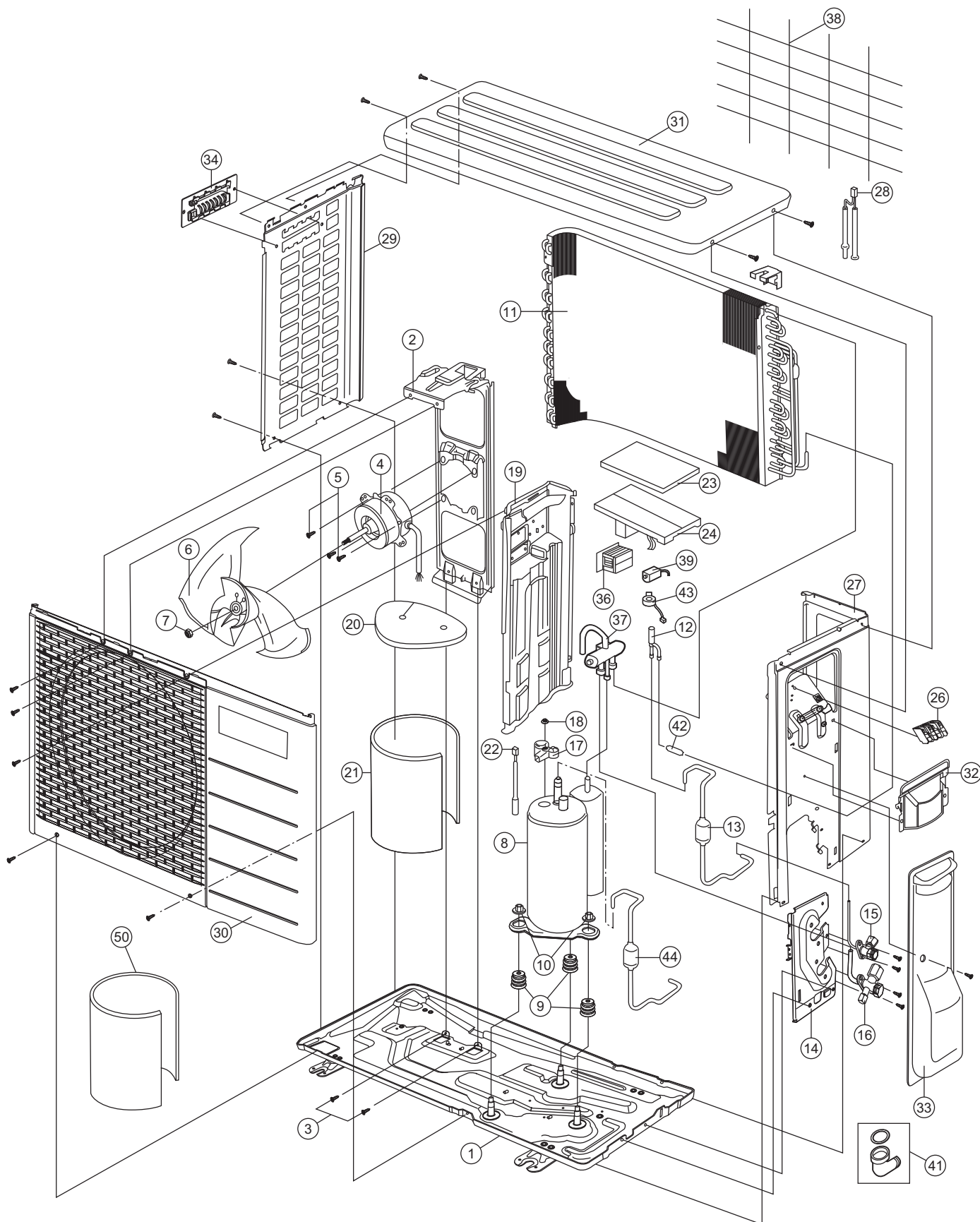


## 21.2 Outdoor Unit

### 21.2.1 CU-RE9SKUA CU-RE12SKUA



**Note**  
The above exploded view is for the purpose of parts disassembly and replacement.  
The non-numbered parts are not kept as standard service parts.

SAFETY	REF. NO.	PART NAME & DESCRIPTION	QTY.	CU-RE9SKUA	CU-RE12SKUA	REMARK
	1	CHASSIS COMPLETE	1	CWD50K2081A	←	
	2	FAN MOTOR BRACKET	1	CWD541089	←	
	3	SCREW - FAN MOTOR BRACKET	3	CWH551217	←	
⚠	4	FAN MOTOR	1	L6CAYYYL0067	←	O
	5	SCREW - FAN MOTOR MOUNT	4	CWH55252J	←	
	6	PROPELLER FAN ASSY	1	CWH03K1100	←	
	7	NUT - PROPELLER FAN	1	CWH56053J	←	
⚠	8	COMPRESSOR	1	5RS102XBC21	←	O
	9	ANTI - VIBRATION BUSHING	3	CWH50077	←	
	10	NUT - COMPRESSOR MOUNT	3	CWH561096	←	
	11	CONDENSER	1	ACXB32C00590	←	
	12	EXPANSION VALVE	1	CWB051078	←	
	13	DISCHARGE MUFFLER (EXP.VALVE)	1	CWB121021	←	
	14	HOLDER COUPLING	1	CWH351231A	←	
	15	2-WAYS VALVE (LIQUID)	1	CWB021180J	←	O
	16	3-WAY VALVE (GAS)	1	CWB011374	CWB011367	O
	17	TERMINAL COVER	1	CWH171039A	←	
	18	NUT - TERMINAL COVER	1	CWH7080300J	←	
	19	SOUND PROOF BOARD	1	CWH151172A	←	
	20	SOUND PROOF MATERIAL (TOP)	1	CWG302656	←	
	21	SOUND PROOF MATERIAL (BODY)	1	CWG302948	←	
	22	SENSOR CO - COMP TEMP	1	CWA50C2340	←	O
	23	CONTROL BOARD COVER - TOP	1	CWH131264	←	
⚠	24	ELECTRONIC CONTROLLER - MAIN	1	ACXA73C04490R	ACXA73C04500R	O
⚠	26	TERMINAL BOARD ASSY	1	CWA28K1154	←	O
	27	CABINET SIDE PLATE CO.	1	CWE04C1226	←	
	28	SENSOR CO - AIR TEMP AND PIPE TEMP	1	CWA50C2710	←	O
	29	CABINET SIDE PLATE	1	CWE041492A	←	
	30	CABINET FRONT PLATE CO.	1	CWE06C1142	←	
	31	CABINET TOP PLATE	1	CWE031018A	←	
	32	CONTROL BOARD COVER	1	CWH131301	←	
	33	CONTROL BOARD COVER - COMPLETE	1	CWH13C1345	←	
	34	HANDLE	1	CWE161010	←	
	36	REACTOR	1	G0C103J00013	←	
	37	4-WAYS VALVE	1	CWB001058	←	
	38	WIRE NET	1	CWD041161A	←	
⚠	39	V-COIL COMPLETE (4 WAY VALVE)	1	ACXA43C00270	←	O
	41	BAG-COMPLETE (L-TUBE)	1	CWG87C900	←	
	42	STRAINER	1	CWB111061	←	
⚠	43	V-COIL COMPLETE (EXPENSION VALVE)	1	ACXA43C00320	←	O
	44	DISCHARGE MUFFLER (4 W. VALVE)	1	CWB121047	←	
	50	SOUND PROOF MATERIAL	1	CWG302292	←	

(Note)

- All parts are supplied from PHAAM, Malaysia (Vendor Code: 00029488).
- "O" marked parts are recommended to be kept in stock.