



Job Name: _____

Location: _____

Engineer: _____

Submitted to: _____

Reference: _____

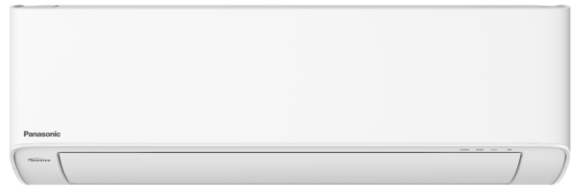
Date: _____

For:	<input type="checkbox"/> File	<input type="checkbox"/> Resubmit
	<input type="checkbox"/> Approval	<input type="checkbox"/> Other _____

Exterios

Indoor Unit: CS-Z24AKUAW

Outdoor Unit: CU-XZ24AKUAC



Cooling Mode Capacity:

Nominal Capacity (BTU/h) Min./Rated/Max)	6,100/24,000/27,200
Power Input (kW) (Min./Rated/Max.)	0.44/2.04/2.45

Heating Mode Capacity:

Nominal Capacity (BTU/h) Min./Rated/Max)	6,800/28,800/37,200
Power Input (kW) (Min./Rated/Max.)	0.40/2.50/3.00

Rating Standard AHRI 210/240:

SEER2	20.50
EER2	11.75
HSPF2	11.00
COP	3.38

Power Supply:

Power Supply (V/PH/Hz)	208-230/1/60
Max Current (A) / Max Input Power (W)	13.6 / 3,130
Starting Current (A)	12.30

Power Supply:

Cooling Amps (A)	
- 208 (Mid)	10.00
- 230 (Mid)	9.10
Heating Amps (A)	
- 208 (Mid)	12.30
- 230 (Mid)	11.10

Operating Capacity:

17°F: Rated Capacity (BTU/h) / I. Power (W)	25,200 / 2,820
5°F: Max Capacity (BTU/h)	20,400

Compressor:

Type	Inverter driven Hermetic rotary
Motor Type	Brushless (6-poles)
Output Power (W)	1500

Noise Levels: Cooling

Indoor Noise (H / L / Q-Lo)(dB-A)	49 / 40 / 34
Indoor Power Level (dB)	65
Outdoor Noise Hi (dB-A)	53
Outdoor Power Level (dB)	67

Noise Levels: Heating

Indoor Noise (H / L / Q-Lo) (dB-A)	49 / 40 / 34
Indoor Power Level (dB)	65
Outdoor Noise Hi (dB A)	54
Outdoor Power Level (dB)	68

Operating Specification:

Min. Circuit Ampacity (A)	20
Max. Overcurrent Protection (A)	30
Moisture Removal L/h (Pt/h)	3.6 (7.6)
Power Supply	Outdoor
Thermostat	Electronic Control
Protection Device	Electronic Control
Refrigerant Cycle:	
- Control Device	Expansion Valve
- Refrigerant Oil cm ³	FW50S (600)
- Refrigerant Type, g (oz)	R32, 1,490 (52.6)

Indoor Fan Stats:

Fan Type	Crossflow Fan
Motor	DC (8-poles)
Input Power (W)	47.3
Output Power (W)	40

Indoor Fan Speeds:

QLo Cool/Heat (rpm)	800/850
Lo Cool/Heat (rpm)	970/1,030
Med. Cool/Heat (rpm)	1,170/1,210
Hi. Cool/Heat (rpm)	1,350/1,370
SHi Cool/Heat (rpm)	1,400/1,400

Indoor Heat Exchanger:

Fin Material	Aluminum (Pre-Coat)
Fin Type	Silt Fin
Row x Stage x FPI	2 x 17 x 21
Size (W x H x L) (in)	32-1/16 x 3-47/64 x 1/2 (sub eva) + 1 x 4 x 21 (sub eva)

Indoor Operation Range:

Cooling	Dry Bulb	Wet Bulb
Minimum °F (°C)	60.8 (16)	51.8 (11)
Maximum °F (°C)	89.6 (32)	73.4 (23)
Heating		
Minimum °F (°C)	60.8 (16)	-/-
Maximum °F (°C)	86.0 (30)	-/-

Indoor Fan Airflow:

Fan Setting	Cool	Heat
QLo (CFM)	377	405
Lo (CFM)	472	505
Med. (CFM)	583	606
Hi. (CFM)	685	695
SHi. (CFM)	712	712

Outdoor Fan Stats:

Fan Type	Propeller Fan
Motor	DC (8-poles)
Input Power (W)	-
Output Power (W)	60

Outdoor Fan Speeds:

Hi. Cool/Heat (rpm)	700/640
---------------------	---------

Outdoor Heat Exchanger:

Fin Material	Aluminum (Blue-Coat)
Fin Type	Corrugated Fin
Row x Stage x FPI	2 x 28 x 19
Size (W x H x L) (in)	1-7/16 x 29-49/64 x 34-13/64:35-5/16

Outdoor Operation Range:

Cooling	Dry Bulb	Wet Bulb
Minimum °F (°C)	0 (-17.8)	-
Maximum °F (°C)	114.8 (46)	78.8 (26)
Heating		
Minimum °F (°C)	-15 (-26)	-
Maximum °F (°C)	75.2 (24)	64.4 (18)

Outdoor Fan Airflow:

Fan Setting	Cool	Heat
Hi. (CFM)	2030	1855

Piping Metrics

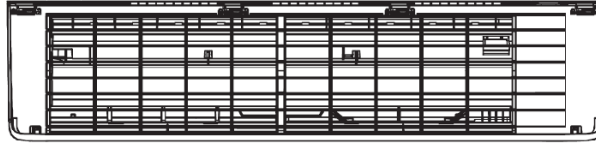
Pipe Diameter Liquid / Gas (In.)	
- Liquid	1/4"
- Gas	5/8"
Standard Length (Ft.)	25
Length Range (Ft) (min-max)	10 - 100
Indoor (CS) & Outdoor (CU) Max Height Difference (Ft)	65.6
Additional Gas Amount (oz/ft)	0.3
Length for Additional Gas (Ft)	33
Drain Hose	
- Inner Diameter (In.)	0.66
- Length (In.)	25.6

Dimensions & Weight

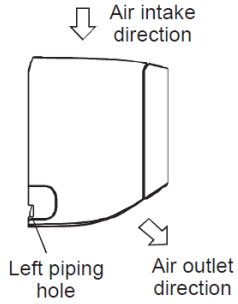
Height (in.)	
- Indoor	11-5/8
- Outdoor	31-5/16
Width (in.)	
- Indoor	40-31/32
- Outdoor	34-15/32
Depth (in.)	
- Indoor	9-5/8
- Outdoor	12-5/8
Weight (lb.)	
- Indoor	31
- Outdoor	110

Indoor Dimensions

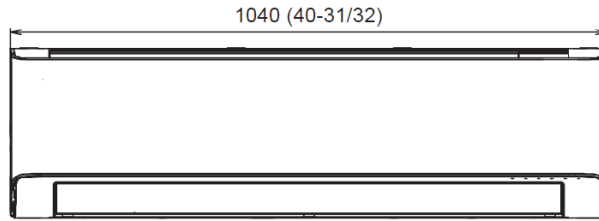
<Top View>



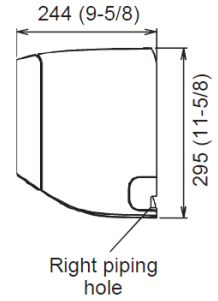
<Side View>



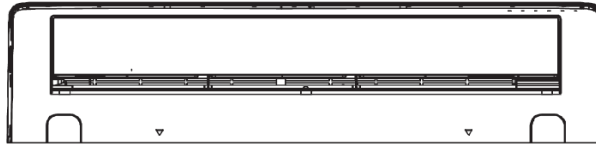
<Front View>



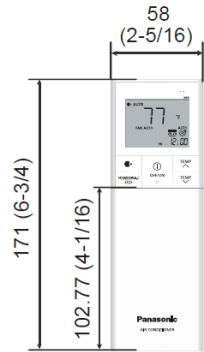
<Side View>



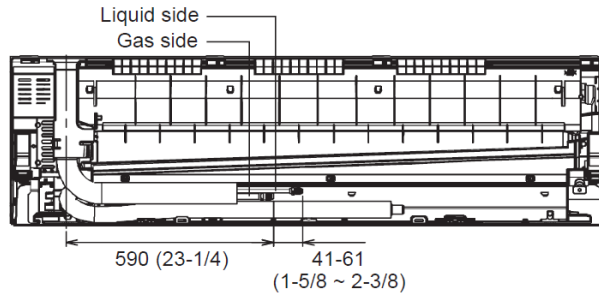
<Bottom View>



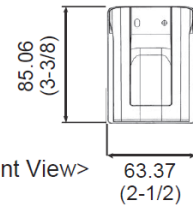
<Remote Control>



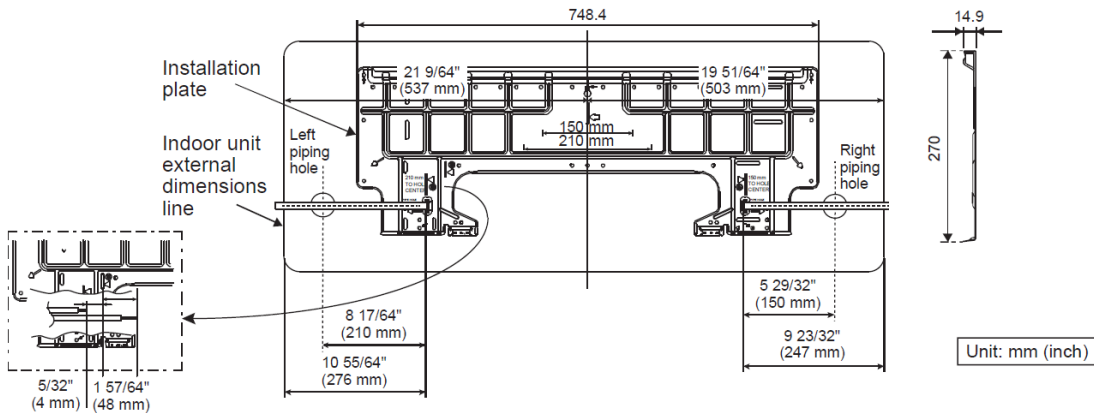
<Rear View>



<Remote Control Holder>



Relative position between the indoor unit and the installation plate <Front View>



Outdoor Dimensions

