

## Submittal Data Sheet

### CS-Z24AKUAW

### Mini Split Indoor Unit

Job Name: \_\_\_\_\_  
 Location: \_\_\_\_\_  
 Engineer: \_\_\_\_\_  
 Submitted to: \_\_\_\_\_  
 Submitted by: \_\_\_\_\_  
 Reference: \_\_\_\_\_

Approval: \_\_\_\_\_  
 Date: \_\_\_\_\_  
 Construction: \_\_\_\_\_  
 Unit #: \_\_\_\_\_  
 Drawing #: \_\_\_\_\_

Power Supply	
Power Supply (V/PH/Hz)	208-230 / 1 / 60

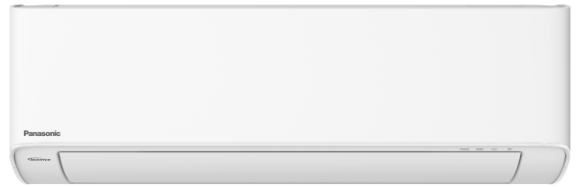
Noise Levels	
<b>Cooling:</b>	
Indoor Noise (H / L / QLo) dB (A)	49 / 40 / 34
Indoor Power Level (dB)	65
<b>Heating:</b>	
Indoor Noise (H / L / QLo) dB (A)	49 / 40 / 34
Indoor Power Level (dB)	65

Indoor Fan Stats	
Fan Type	Crossflow Fan
Motor	DC (8-poles)
Input Power (W)	47.3
Output Power (W)	40

Indoor Fan Speeds	
QLo Cool / Heat (rpm)	800 / 850
Lo Cool / Heat (rpm)	970 / 1030
Med Cool / Heat (rpm)	1170 / 1210
Hi Cool / Heat (rpm)	1350 / 1370
SHi Cool / Heat (rpm)	1400 / 1400

Indoor Airflow	
QLo Cool / Heat (CFM)	377 / 405
Lo Cool / Heat (CFM)	472 / 505
Med Cool / Heat (CFM)	583 / 606
Hi Cool / Heat (CFM)	685 / 695
SHi Cool/Heat (CFM)	712 / 712

Indoor Heat Exchanger	
Fin Material	Aluminum (Pre-Coat)
Fin Type	Silt Fin
Row x Stage x FPI	2 x 17 x 21
	1 x 4 x 21 (sub eva)
Size (W x H x L) (in)	32-1/16 x 14-1/16 x 1
	32-1/16 x 3-47/64 x 1/2 (sub eva)



Intertek



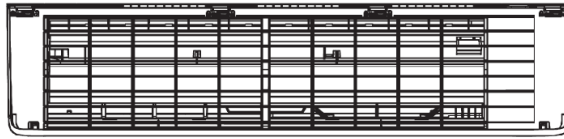
Indoor Operating Range		
Cooling	Dry Bulb	Wet Bulb
Minimum °F (°C)	60.8 (16)	51.8 (11)
Maximum °F (°C)	89.6 (32)	73.4 (23)
Heating		
Minimum °F (°C)	60.8 (16)	-/-
Maximum °F (°C)	86.0 (30)	-/-

Dimensions and Weight	
Height x Width x Depth (in)	11-5/8 x 40-31/32 x 9-5/8
Weight (lb.)	31

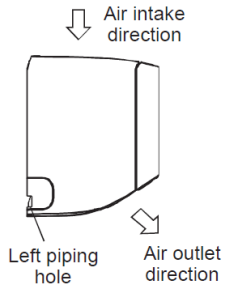
Piping Metrics	
Pipe Diameter Liquid / Gas (in)	
- Liquid	1/4"
- Gas	5/8"
Standard Length (ft.)	25
Length Range (ft) (min-max)	10 - 100
Indoor (CS) & Outdoor (CU) Max Height Difference (ft)	65.6
Additional Gas Amount (oz/ft)	0.3
Length for Additional Gas (ft)	32.8
Drain Hose	
- Inner Diameter (in)	0.66
- Length (in)	25.6

## Indoor Dimensions

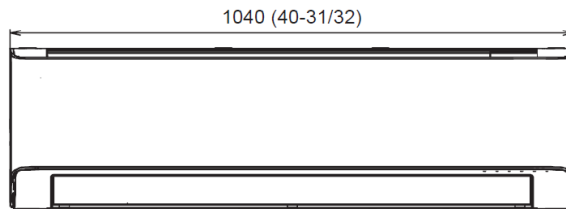
<Top View>



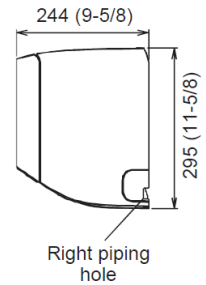
<Side View>



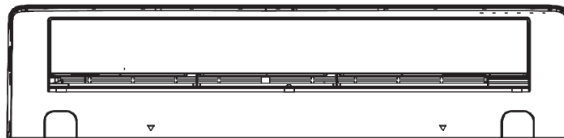
<Front View>



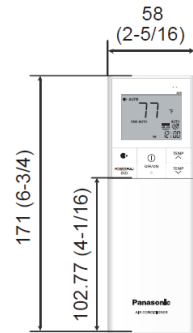
<Side View>



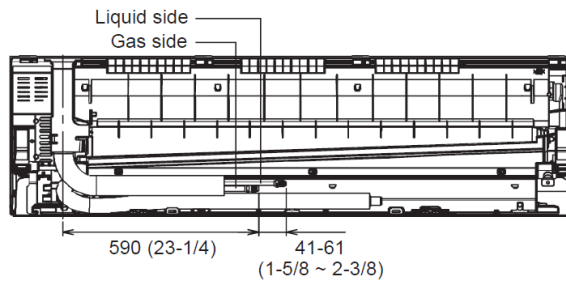
<Bottom View>



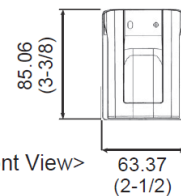
<Remote Control>



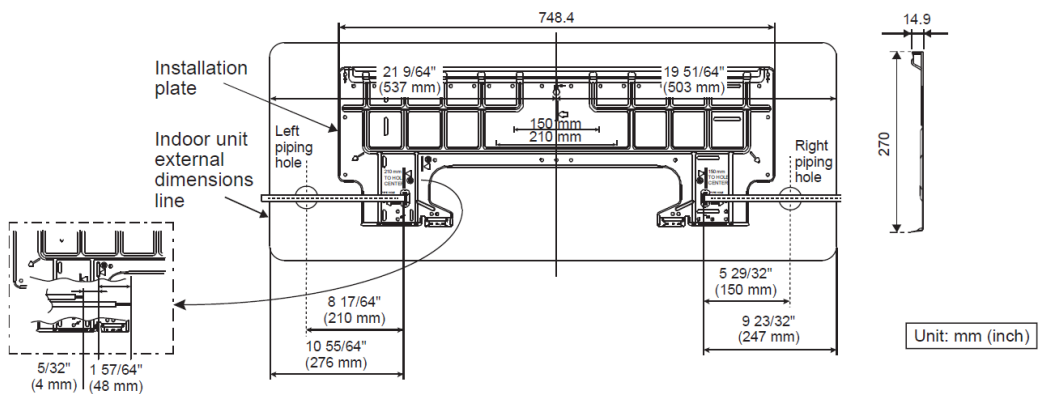
<Rear View>



<Remote Control Holder>



Relative position between the indoor unit and the installation plate <Front View>



**Panasonic Canada**

5770 Ambler Drive  
Mississauga, ON L4W 2T3

<https://na.panasonic.ca/indoor-air-quality/hvac>

**breathe well**

The Only Complete Air Quality Solution™