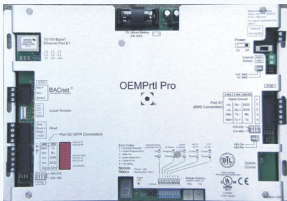


## BMS-CTRL-1

Multi Protocol Controller | Requires (1) Communication Adaptor (CZ-CFUNC1U)



The BMS-CTRL1 is capable of integrating with Modbus, LonWorks, N2 and BACnet over IP, MSTP, Ethernet and ARC156 protocols. Monitors and controls all generations of ECOi, ECOi EX and PACi systems. Up to 90 indoor units and 10 refrigerant circuits can be integrated (up to 30 indoor units on N2 systems). Requires factory programming. LonWorks integration requires (1) field supplied Echelon SLTA-10 per device.

## CZ-CLNC1U

LonWorks Interface



The CZ-CLNC1U LonWorks Interface can control up to 16 indoor units. Monitors and controls all generations of ECOi, ECOi EX and PACi systems. Connects directly into the communication bus and is field-configured via dip switches.

**BMS-CTRL1** and **CZ-CLNC1U** offer the following setting and monitoring objects. Some objects are not available on all indoor models.

### Indoor Unit Operation/Setting Objects

- On/Off
- Mode
- Setpoint
- Fan Speed
- Air Direction (n/a for Ducted Units)

### Indoor Unit Monitor/Status Objects

- On/Off
- Mode
- Setpoint
- Fan Speed
- Air Direction
- Space Temperature
- Unit and System Error Codes

# HEATING AND AIR CONDITIONING

Wireless Home Devices and Building Management Systems



**Panasonic**

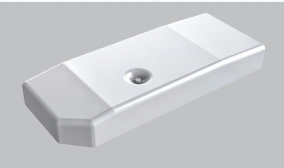
Panasonic Corporation of North America  
Panasonic Appliances Air-Conditioning North America  
1690 Roberts Blvd., NW, Suite 110, Kennesaw, GA 30144 U.S.A.  
[us.panasonic.com/aircon](http://us.panasonic.com/aircon)

Panasonic Canada Inc.  
Enterprise Product Sales  
5770 Ambler Dr., Mississauga, ON, L4W 2T3 CANADA  
[www.panasonic.ca](http://www.panasonic.ca)



Wireless Home

Wireless Home devices connect and remotely control a system with one or more indoor units via the cloud. A Wi-Fi Home accessory is required for every indoor unit. This applies to RAC, PAC, ECOi and ECOi EX systems. Requires an internet connection and a Wi-Fi router. Control your equipment remotely using any web browser, and your favorite iOS® or Android® mobile device.



**Residential Wired Model Number: USPA-AC-WIFI-1A**  
The Wireless Home device is connected to the indoor unit PCB with the included cable.



**ECOi, ECOi EX and PACi Model Number: USPA-RC2-WIFI-1**  
The Wireless Home device controls the indoor by connecting to the wired remote terminals. It can be combined with wired remotes.



**IR Model Number: USIS-IR-WIFI-1**  
The Wireless Home device controls the indoor unit with Infrared signals and does not require a direct connection.

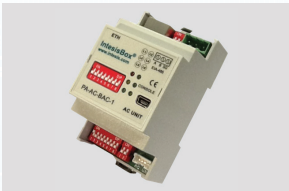
Wireless Home controls up to 50 indoor units. A Pro license is available to control more than 50 indoor units.

BACnet Integration

BACnet IP and MSTP Controller | Requires (1) device per indoor unit



The **USPA-RC2-BAC-1** is a BACnet IP or MSTP device capable of monitoring and controlling all generations of ECOi, ECOi EX and PACi units. Simply configured via external switches. Graphical User Interface is easily accessed through the Ethernet port.



The **USPA-AC-BAC-1** is a BACnet over IP or MSTP device. A controller is required for every indoor unit. Simply configured via external switches. Graphical User Interface is easily accessed through the Ethernet port.



The **USPA-AC-BAC-128** is a BACnet over IP server device capable of monitoring and controlling ECOi, ECOi EX and PACi systems. Up to 128 indoor units and 10 refrigerant circuits can be integrated (up to 30 PACi systems). Auto-Discover feature detects connected Panasonic equipment for easy setup and integration. Setup and control via Ethernet port to access GUI.

BACnet IP Controller, Requires (1) Communication Adaptor (CZ-CFUNC1U)

The **USPA-AC-BAC-128**, **USPA-RC2-BAC-1** and **USPA-AC-BAC-1** all feature occupied/unoccupied heat and cool set points for reduced programming time and greater energy efficiency.

Features\*

- |  |   |
|--|---|
| <ul style="list-style-type: none"><li>• On/Off</li><li>• Heat, cool, dry, and auto modes</li><li>• Set Point Temperature</li><li>• Adjust fan speed</li><li>• Louver Direction (if applicable)</li><li>• Ambient Temperature</li><li>• AC Unit Error Signals, Codes and Description</li><li>• Multi-lingual Interface</li><li>• Automatic Firmware Updates</li><li>• Allows Multiple Users</li></ul> | <ul style="list-style-type: none"><li>• Annual Schedule Calendar (up to patterns, up to 10 actions per pattern)</li><li>• Multiple Home/Zone Management</li><li>• Powerful and Energy Savings Modes</li><li>• Advanced User Functions</li><li>• AC Unit Error Signals, Codes and Description</li><li>• Error E-mail Notifications</li><li>• User Defined Alerts (coming soon)</li><li>• Weather Forecast (iOS and Android)</li><li>• Up to 10 Timers and Scenes</li></ul> |
|--|---|

\*Not all features are available for all indoor models

Global and Individual Operation/Setting Objects\*

- All On/Off
- On/Off
- Mode
- Setpoint
- Fan Speed
- Air Direction (n/a for ducted units)
- Filter Sign Reset
- Prohibit Thermostat Functions
- Occupancy/Unoccupied All
- Occupied/Unoccupied Cool Setpoints
- Occupied/Unoccupied Heat Setpoints
- Run Time Consumption Reset
- ECONAVI – Human Detection (if available)

\*Some objects may not be available with all indoor models

Global and Individual Monitor/Status Objects\*

- On/Off
- Mode
- Setpoint
- Fan Speed
- Air Direction
- Space Temperature
- Prohibited Thermostats Functions
- Filter Status
- Unit and System Error Codes
- CZ-FUNC1U Error Codes (BAC-128)
- Occupied/Unoccupied Mode
- Today, Yesterday and Total Run Time Consumption